



MENATEK
Defense Technologies

30th year

CAPABILITY BOOK

FOR THE FIELD
ON THE FIELD

www.menatek.com.tr



MENATEK
Defense Technologies

30th year



30 *years*

MICRO ACCURACY, MACRO STRENGTH



MENATEK Defense Technologies

CAPABILITY BOOK

Content

CONTENT

- 1. Who we are..... 1
 - MENATEK Infographic..... 8
 - MENATEK History..... 9
- 2. About Us..... 13
 - Corporate..... 14
 - Engineering..... 15
 - Strategic..... 16
 - Focus Sectors..... 17
- 3. Capabilities..... 19
 - MENATEK: The Engineering House..... 21
 - Design..... 23
 - Manufacturing..... 25
 - Manufacturing Subsystem and Components..... 27
 - Quality & Certificates..... 31
 - Customized Test Systems..... 33
 - Supply Chain Management..... 35
 - After Sales Services..... 37
 - MRO&U..... 39
 - Localization..... 43
- 5. Platforms..... 45
 - Critical Parts on Platforms..... 47
- 6. Special Products..... 49
 - Running Gear..... 57
 - NAZ Bearings..... 59
 - Torsion Bar..... 67
 - Track Shoe..... 71
 - Menatrack..... 75
 - Barrel..... 79



WHO WE ARE



MENATEK CAPABILITY BOOK

WHO WE ARE

MENATEK



Founded in
1995

Total area
3,900 m²

Dynamic and proficient
Team
100 Employee | 55 Engineer

30 years
of industry experience

Export to
45+ countries
International presence

Major clients
Turkish Army, US Army, NATO Units & Global OEMs

USA Prime Contractor
The only Turkish company working with the US Government since 2006
Cage Code (T1978)

Operations comply with
NATO standards

Solution partner
with comprehensive capabilities

MENATEK History

Establishment

1995

Supply to **Turkish Army**

Supply to **US Army**

2000

Supply to **NSPA**

2002

Strategic Support to **ARMY MROs**

2008

Strategic Supplier of **Global OEMs & Vehicle Manufacturers**

2015

Establishment of **R&D Department**

2017

First Product of **NAZ Bearings ®**

2018

Foundation of **WOLARF**

New **MENATEK HQ**

2021

New **Quality - Test - Metalography Lab**

Expanded capabilities to include **Former Soviet Equipment** systems

2022

Adapting to **WOLARF** System

2023

Collab with DuPont Trade & License Agreement for **NAZ Bearings ®**

2024

Launching 3-year Strategic Plan (2025-2028)

2025

Received the **Award** in the “SME Export Champions” category (Small and Medium-sized Enterprises) at the Global Strategies Conference organized by the Presidency of Defense Industries (SSB).

Menatek **30th year** GALA celebration

Successfully completed **AS9100 certification**

WHO WE ARE



MENATEK CAPABILITY BOOK

MENATEK Defense Technologies,

More than a company — a legacy of precision, innovation, and trust.

CELEBRATING 30 YEARS OF EXCELLENCE, Menatek — founded in **1995** in Istanbul— has evolved into a global leader in defense engineering, specializing in the **Design, Manufacturing, Quality&Testing, Supply Chain Management**, and **After Sales Support** of critical components for land platforms.

Built on strong family values and a forward-looking vision, Menatek serves the **Turkish Army, NATO Nations, the U.S. Army, NSPA, European Allies**, and **Key Defense Partners** across the globe—**exporting to over 45 countries worldwide**.

We are proud to supply critical components to the **U.S. Army** and **NSPA**, operating under **Cage Code 1978** as a recognized and trusted supplier. Menatek is also a strategic partner to **Global OEMs and Vehicle Manufacturers**, and provides essential support to **Army MROs** through engineering know-how, responsive logistics, and integrated solutions.

Our ability to localize and nationalize defense technologies not only strengthens Turkey's defense industrial base but also enhances the operational readiness of our international partners.

Menatek delivers more than components — we provide fully integrated engineering and manufacturing solutions that meet the highest military and industrial standards. Our strength lies in bridging innovation with real-world application, combining technical excellence with operational reliability.

In **2024**, our strategic collaboration with **DuPont** led to the launch of **NAZ Bearings®**, a breakthrough innovation expanding our reach into **Aerospace, Wind Energy, and other advanced industrial sectors**. This partnership reflects our commitment to pushing technological boundaries and exploring new frontiers.

As part of our continuous improvement and commitment to excellence, **we have successfully completed the AS9100 certification process**. All our processes are managed in accordance with this internationally recognized quality management system, ensuring consistent, high-level performance in every project we undertake.

At Menatek, we are guided by a clear mission:

To innovate, to localize, and to elevate the defense industry — for Turkey and the world.

As we continue to grow, our commitment remains unchanged:
To deliver high-quality, reliable, and future-ready solutions to our partners worldwide.

www.menatek.com.tr

WHO WE ARE



MENATEK CAPABILITY BOOK



TİM
TÜRKİYE
İHRACATÇILAR
MECLİSİ



SAVUNMA & HAVACILIK



ABOUT US



MENATEK CAPABILITY BOOK



30 OCAK - 02 ŞUBAT 2025 - ANTALYA
SAVUNMA & HAVACILIK
SANAYİİNDE KÜRESEL STRATEJİLER
KONFERANSI

TİM
TÜRKİYE
İHRACATÇILAR
MECLİSİ



KOBİ İHRACAT ŞAMPİYONLARI

MENATEK SAVUNMA TEKNOLOJİLERİ SAN. TİC. A.Ş.



İLİK
AYII

SHIPYARD

CZSR



MENATEK
Defense Technologies

30th year

2025

RECEIVED THE AWARD
IN THE
"SME EXPORT CHAMPIONS"

(Small and Medium-sized Enterprises) at the Global Strategies Conference
organized by the Presidency of Defense Industries (SSB).

ABOUT US



MENATEK CAPABILITY BOOK

About Us



Corporate



Establishment

Founded in 1995 in Istanbul, MENATEK operates on a total area of 3,900 m²



Team

A dynamic and competent workforce
A strong team with a total of 100 employees, including nearly 55 engineers



International Presence

A broad presence in the global market with exports to over 45+ countries



Key Customers

Turkish Armed Forces, The U.S. Army, NATO Units, and global OEMs,
The only Turkish company working with the U.S. Government since 2006



Compliance with NATO and Western Standards

Our operations are conducted in full compliance with NATO and international standards.

ABOUT US



MENATEK CAPABILITY BOOK

Engineering

ABOUT US



MENATEK CAPABILITY BOOK

Deep Engineering and Technical Expertise

High-quality production capacity supported by comprehensive engineering knowledge and advanced analytical capabilities.



Shaping Materials

The ability to process various materials with high precision, achieving the desired form and functionality.



Strong Supply and Process Management

Efficient process management through reliable supply chain management and process optimization.



Technical Drawing and Prototyping

Proficiency in reading technical drawings and developing innovative prototypes.



Mechanical Design Competence

Advanced mechanical design and engineering solutions.



Strategic



Business Development and Strategic Growth

A strategic approach that supports continuous growth and new business opportunities.



Flexibility and Adaptation

The ability to quickly adapt to changing conditions and maintain operational flexibility.



Solution-Oriented Approach and Business Partnership

Serving as a reliable solution partner for customers with extensive competencies.



Rapid Response

The ability to provide quick and effective solutions to customer demands, ensuring immediate fulfillment of needs.



Network

The capability to build sustainable collaborations and create new opportunities through a broad and strong business network.

ABOUT US

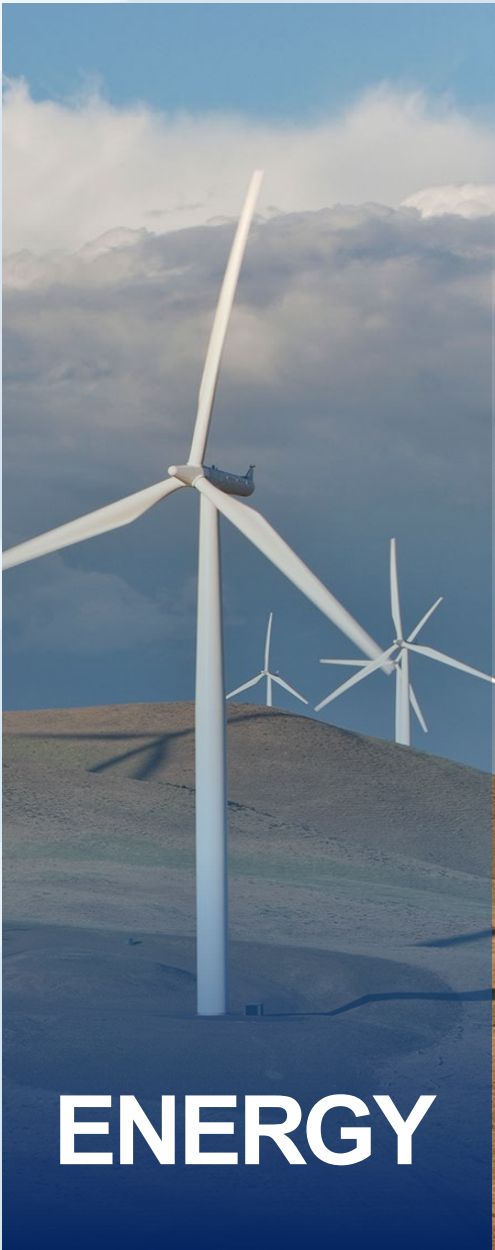
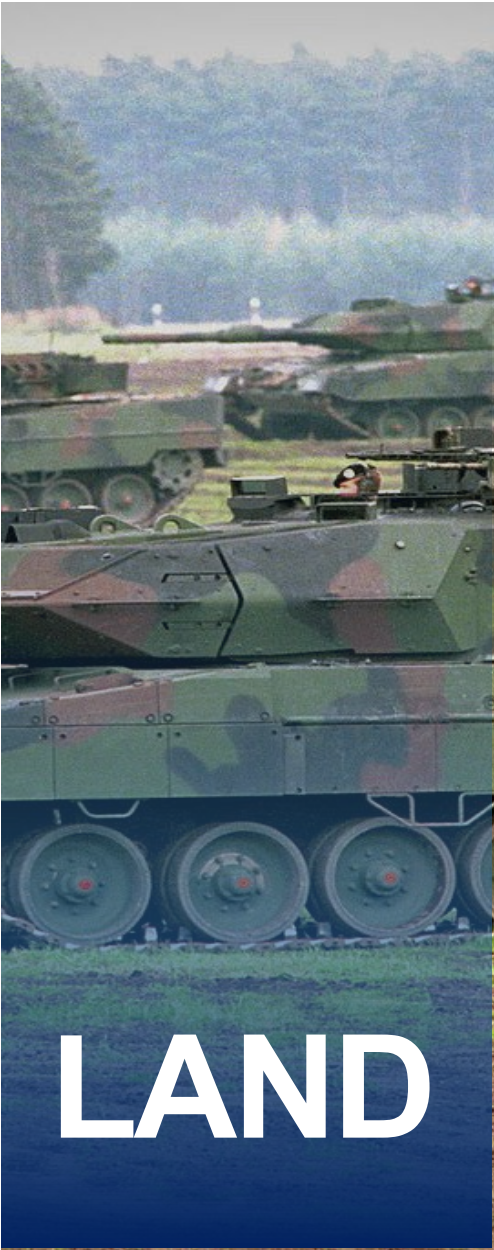


MENATEK CAPABILITY BOOK



MENATEK
Defense Technologies
30th year

Focus Sectors





CAPABILITIES & SERVICES

THE ENGINEERING HOUSE

CAPABILITIES



MENATEK CAPABILITIES BOOK



MENATEK | The Engineering House

At Menatek, **we do more than just manufacture—we engineer the future.** With our end-to-end capabilities, we provide comprehensive solutions tailored to the needs of the defense industry. **From design to after-sales services, every step is guided by precision, innovation and excellence.**



MENATEK: The Engineering House

1

Design

Every great product starts with an idea and at Menatek, **we turn ideas into reality**. Our engineering expertise enables us to develop cutting-edge designs with advanced analysis, simulations, and modeling. Whether it's designing critical components or optimizing existing systems, our team ensures efficiency, durability, and superior performance in every solution.

4

Supply Chain Management

A strong supply chain is the backbone of seamless operations. At Menatek, we excel in supply chain management, ensuring timely procurement, streamlined logistics, and cost-effective solutions. Our global network and strategic partnerships enable us to source the best materials while maintaining full compliance with international regulations.

2

Manufacturing Excellence

With high-precision production capabilities, **Menatek transforms raw materials into mission-critical components.** Our manufacturing processes adhere to the highest industry standards, ensuring exceptional quality, consistency, and reliability in every part we produce.

5

After-Sales Services

Our commitment doesn't end with production. Menatek offers **comprehensive after-sales support**, including maintenance, repairs, and technical assistance. Whether it's ensuring long-term performance or providing rapid solutions, we stand by our partners every step of the way. With a holistic approach to engineering, Menatek is more than a manufacturer—it is The Engineering House that drives innovation, excellence, and reliability in the defense industry.

3

Quality & Testing

In the defense industry, there is no margin for error. That's why Menatek implements rigorous quality control measures at every stage. Our in-house testing and validation processes ensure that every component meets NATO and international standards, guaranteeing flawless performance in the most demanding environments.

CAPABILITIES

MENATEK CAPABILITY BOOK

We turn ideas
into reality

[Design](#)

[Manufacturing](#)

[Quality & Test](#)

[Supply Chain](#)

[After Sales](#)



CAPABILITIES



MENATEK CAPABILITY BOOK

***FOR THE FIELD
ON THE FIELD***

1

DESIGN

Our Core Capability

At Menatek, design is the foundation of innovation. With a deep technical expertise and a solution-driven approach, we create high-performance systems that meet the evolving needs of the defense industry. From product development to localization, our design capabilities ensure efficiency, reliability, and excellence at every stage.

CAPABILITIES



MENATEK CAPABILITY BOOK

Product Development

Our product development team designs advanced solutions that meet the most demanding operational requirements, ensuring durability, precision, and superior functionality in every component.

Localization

Global standards, local expertise. Menatek specializes in localizing critical defense components, reducing dependency on foreign suppliers while ensuring full compliance with NATO and international standards. Our expertise in localization strengthens domestic production capabilities without compromising quality or performance.

R&D

With a **forward-thinking mindset**, our R&D efforts focus on continuous improvement and cutting-edge innovation. We integrate the latest engineering methodologies and technological advancements to enhance system capabilities and develop next-generation solutions for modern defense challenges.

Technical Data Generation

Through in-depth analysis and precision engineering, we generate detailed technical data that enables the reproduction of essential components with high accuracy. By leveraging advanced measurement, modeling, and validation techniques, we provide seamless integration and operational compatibility for mission-critical systems.

DESIGN CAPABILITY

CAPABILITIES



MENATEK CAPABILITY BOOK

2

MANUFACTURING

Our Core Capability

At Menatek, manufacturing is where precision meets performance. Leveraging advanced production technologies and rigorous quality standards, we deliver mission-ready components for the world's most demanding defense platforms. From prototyping to full-scale production, our manufacturing capabilities ensure consistency, durability, and uncompromising excellence every time.

CAPABILITIES



MENATEK CAPABILITY BOOK

Subsystem & Components

Engineered with mastery, manufactured with precision—Menatek delivers mission-critical subsystems and components through [over 500 proven processes](#).

More than **500** process

Build to Print

From data to reality—Menatek turns complex drawings into fully functional parts with unmatched accuracy and speed.

Over **30,000** existing data.
Anything can be manufactured
according to data packs.

CASTING

FORGING

CNC MACHINING

GEAR MANUFACTURING

COLD FORMING

MANUFACTURING CAPABILITY

**Subsystem & Components
Build to Print**

CAPABILITIES



MENATEK CAPABILITY BOOK

**consistency, durability, and
uncompromising excellence
every time.**

Manufacturing Subsystems & Components

Precision in Every Part, Strength in Every Mission

At Menatek, we engineer durability, precision and performance for military land platforms. With our advanced manufacturing expertise, we produce critical subsystems and components that ensure operational superiority in the most demanding environments. From suspension to powertrain, braking to lubrication, every component we manufacture is built for uncompromising reliability and endurance.

- ❖ **Suspension Systems**
- ❖ **Running Gear**
- ❖ **Powertrain Components**
- ❖ **Brake Systems**
- ❖ **Heating & Cooling Systems**
- ❖ **Lubrication Systems**
- ❖ **Chassis Components**
- ❖ **Other Components**

CAPABILITIES



MENATEK CAPABILITY BOOK

Subsystems & Components



Suspension Systems

Menatek’s high-performance suspension components are designed to **maximize vehicle stability, maneuverability and durability**. These components ensure optimal shock absorption and load distribution, enhancing mission capability in **extreme conditions**. Menatek designs and manufactures a wide range of suspension components:



Rotary Damper



Torsion Bar



Support Arm



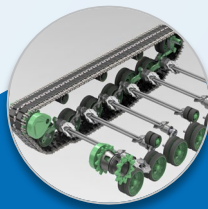
Support Arm Assembly



Linear Damper



Suspension Housing



Running Gear

Our running gear solutions provide reliable mobility and extended service life for tracked military vehicles, **ensuring superior traction on any terrain**. Menatek offers a **broad selection of running gear components**:



Idler Arm



Track Adjuster



Track Shoe Body



Sprocket Assembly



Rim



End Connector

From Critical Parts to



Powertrain Components

Menatek’s **powertrain components** are built to deliver **efficient power transmission and durability**, ensuring seamless performance in high-stress military operations. We manufacture a comprehensive range of **powertrain components**:



Power Take-Off (PTO)



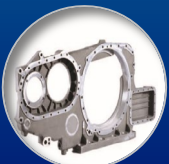
Cam Stator



Planetary Gears



Lubrication Cover



Engine Cover



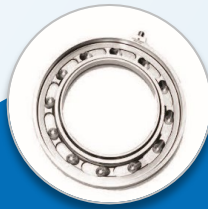
Final Drive Assembly



Lamelle



Transmission Cover



Brake Systems

Our **high-durability braking solutions** provide reliable stopping power, enhancing safety and vehicle control in demanding operational environments. Menatek develops and supplies various **brake system components**:



Brake Ring Assembly



Brake Linings



Subsystems & Components



Heating & Cooling Systems

Menatek’s **thermal management solutions** prevent overheating and ensure continuous operational efficiency. We provide a diverse selection of **heating and cooling components**:



Radiator



Dust Blower



NBC Cooler



Fan Housing



Axial Fan

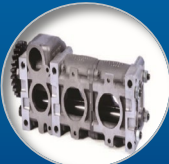


Additional Dust Blower



Lubrication Systems

Our **lubrication components** are designed to ensure **smooth engine operation and increased longevity**. Menatek manufactures a variety of **lubrication components**:



Engine Oil Pump



Pump



Pump



Liquid Pump Body



Water Pump

Complete Performance



Chassis Components

Menatek produces **high-strength chassis components** that provide **structural integrity and durability** under extreme mechanical stress. Our **chassis components**:



Control Arm



Roll Bar



Structural Frame



Control Arm



Steering Gear Assembly



Suspension Bracket



Other Components

Beyond core subsystems, Menatek supplies **customized and high-precision components** to support a variety of military vehicle applications. We offer an extensive range of **additional components**:



Gearbox Body



Cylinder Head



Fuel Tank Fillers



Various Other Components

QUALITY & CERTIFICATES

CAPABILITIES



MENATEK CAPABILITY BOOK

3

OUR QUALITY POLICY

Our Core Capability

- To prepare the necessary infrastructure for the implementation of the quality system and the participation of employees in the system,
- To provide products and services in accordance with national and international standards and legal requirements with the principle of continuous improvement in a timely and desirable quality in order to meet the changing and developing needs of our customers,
- To continuously improve the Quality System by continuously monitoring technology and using the necessary resources to incorporate innovations into the company structure,
- To adopt continuous improvement of systems as a way of life in order to be innovative and competitive by setting measurable targets at every stage of the processes,
- To provide products and services that will provide the highest benefit to our customers as the best solution partner and to ensure customer satisfaction as an organization that makes significant contributions to the national economy and is aware of its responsibilities towards society and the environment.

QUALITY SYSTEM / CERTIFICATES



ISO 9001



AS 9100



NATO Security Clearance



CMMC Level-2 *Cybersecurity Maturity Model Certification granted by the US Department of Defense (DoD)*

CAPABILITIES



MENATEK CAPABILITY BOOK

CUSTOMIZED TEST SYSTEMS

3 ***CUSTOMIZED TEST SYSTEMS***

Our Core Capability

Validation

Verification

Qualification

Endurance

Turn-Key Test Systems

Custom Test Unit Design, Manufacture, Installation and Training for;

- Engine,
- Transmission,
- Power-Pack
- Gear Box,
- Damper (Hydro-pneumatic, Rotary and others)
- Pump (Gear, Centrifugal and others)
- Electric Motor,
- Accumulator,
- And many other Mechanical, Electro-Mechanical and Hydraulic Components.

CAPABILITIES



MENATEK CAPABILITY BOOK

Transmission Testing



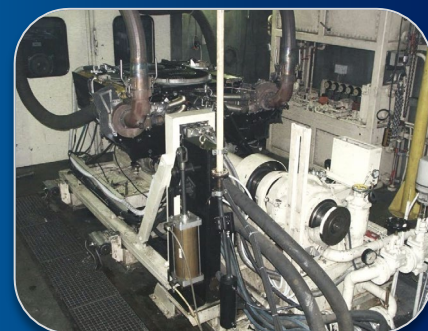
Transfer Case Test Bench



Torsion Bar Test Bench



Engine Testing



4

SUPPLY CHAIN MANAGEMENT

Our Core Capability

Menatek subcontracts it's suppliers only on process level. We maintain a broad and diversified network of over 1,500 qualified and approved suppliers, ensuring maximum flexibility, efficiency, and reliability in all procurement activities.

With 30 years of strategic supplier collaboration, Menatek has built a **sustainable and resilient supply chain** that supports long-term operational continuity and responsiveness in complex defense programs.

Menatek successfully manages **approximately 500 concurrent production processes,** ranging from precision machining to advanced assembly, and assumes **full quality responsibility** for every component delivered.

This robust supplier ecosystem—fully integrated with Menatek's engineering, quality, and logistics infrastructure—enables the seamless execution of high-mix, high-complexity projects with consistency, speed, and confidence.

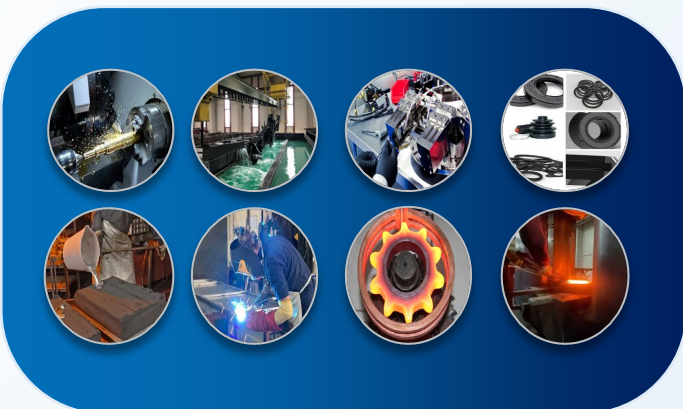
CAPABILITIES



MENATEK CAPABILITY BOOK

TOTAL 1.500 SUPPLIER

PROCESS



RAW MATERIALS



PARTS



SUPPLY CHAIN MANAGEMENT

CAPABILITIES



MENATEK CAPABILITY BOOK

Total 1.500 Suppliers
Broad and Diversified Network
~500 Production Process

AFTER SALES SERVICES

CAPABILITIES



MENATEK CAPABILITY BOOK

5 ***AFTER SALES SERVICES***

Beyond Delivery, Committed Always

More than production—Menatek stands by its partners with comprehensive after-sales solutions for lasting success.

Our commitment doesn't end with production. Menatek provides comprehensive after-sales support, including maintenance, repairs, and technical assistance. Whether it's sustaining long-term performance or delivering rapid solutions, we stand by our partners every step of the way. With a holistic engineering approach, Menatek is more than just a manufacturer—it is The Engineering House that drives performance, precision, and trust across the defense industry.



**Beyond support—building trust
that lasts**



CAPABILITIES



MENATEK CAPABILITY BOOK

MRO & U

MAINTENANCE

REPAIR

OVERHAUL

UPGRADE

MRO & U

Maximizing Performance, Ensuring Readiness

From production to operational readiness — we lead the full mission lifecycle. At Menatek, we ensure the longevity, reliability, and peak performance of defense platforms through our Maintenance, Repair, Overhaul, and Upgrade (MRO&U) services.

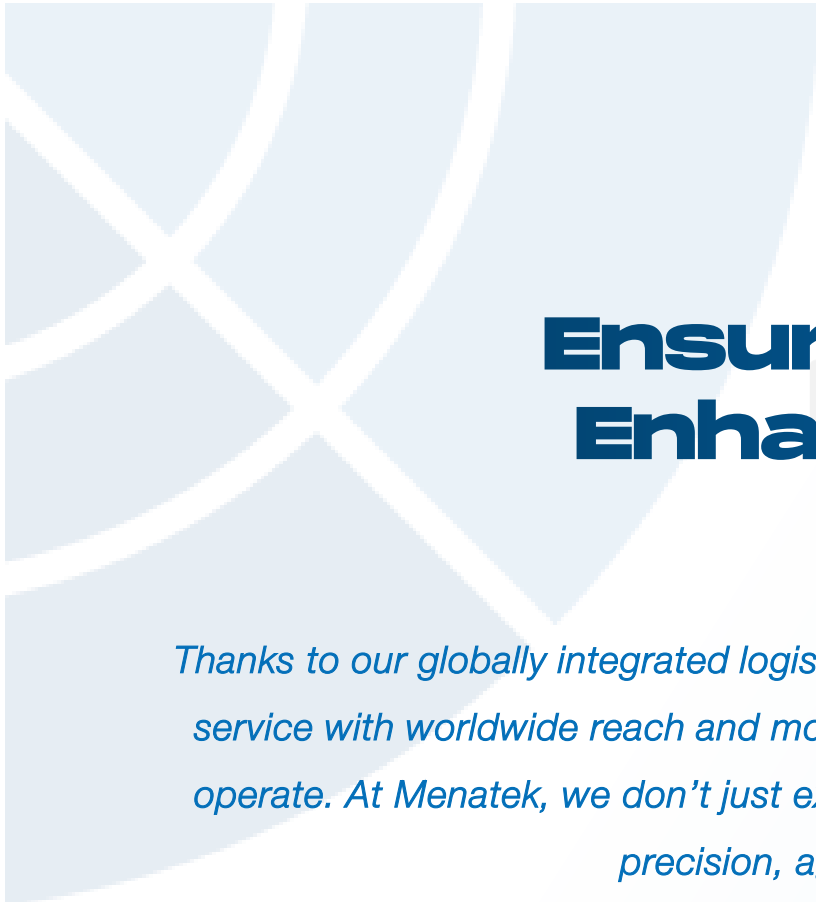
Our expertise covers **complete system overhauls, performance-enhancing upgrades**, and component-level restorations, guaranteeing that **mission-critical vehicles remain battle-ready and operationally efficient** at all times. Backed by **30 years of industry experience** and a proven track record in military sustainment programs, Menatek offers **tailored MRO&U solutions** fully aligned with **NATO standards** and **NSPA frameworks**. Our dedicated MRO teams combine deep technical know-how with **rapid deployment capabilities**, responding swiftly to urgent field requirements across a wide range of operational environments.

Some of our MRO capabilities include:

- **Engine**
- **Transmission**
- **Suspension System**
- **Running Gear**
- **Differentials**
- **Chassis**
- **Brake System**
- **Electrical & Electronical System**
- **Armor**
- **Vast Selection of Spare Part**



Pre-Readiness Campaign



**Ensure
Enhance**

Thanks to our globally integrated logistics service with worldwide reach and more, we can operate. At Menatek, we don't just export precision, we export it.

PLATFORMS

PLATFORMS

MENA



With state-of-the-art facilities, expert engineers, and a mission-driven approach, Menatek delivers end-to-end MRO&U solutions that extend the life cycle of armored vehicles, ensuring unmatched reliability in the field. **Ready to restore, upgrade and reinforce your fleet? Menatek is your trusted MRO&U partner.**

MENATEK: Your trusted MRO&U partner

CAPABILITIES



MENATEK CAPABILITY BOOK

Maintenance

Repair

Overhaul

Upgrade



CAPABILITIES



MENTATEK CAPABILITY BOOK

LOCALIZATION

LOCAL PARTNERSHIP
LOCAL CAPACITY DEVELOPMENT
TALENT DEVELOPMENT

LOCALIZATION

Strengthening Domestic Capabilities

At Menatek, localization means building sustainable capabilities that deliver long-term value across the defense industry. We focus on developing core competencies in engineering, manufacturing, testing, and lifecycle support—ensuring that these capabilities are scalable, adaptable, and ready for complex mission requirements.

We believe in the power of **strategic alliances** to multiply impact. The technologies, systems, and know-how we develop are structured to be transferred and integrated into collaborative frameworks. This allows our partners to gain direct access to proven capabilities, accelerating their development timelines and improving interoperability. Through this approach, Menatek enables its partners to strengthen their defense platforms with reliable, high-performance solutions. From **joint programs** to **capability integration and collaborative support**, we create structures that foster shared resilience, technical autonomy, and long-term operational success.

Local Partnership

Strong local partnerships drive innovation and sustainability. **Menatek enhances local expertise while maintaining global standards.** Our commitment to long-term cooperation ensures a robust supply chain and continuous technological advancement.

Local Capacity Development

Developing domestic production and engineering capabilities is key to **national security and economic growth.** Menatek actively contributes to increasing local manufacturing competencies, **reducing dependency on foreign suppliers, and creating cost-effective, high-quality solutions** that align with NATO and international standards. Menatek is shaping the future of defense by fostering **self-reliance**, innovation, and long-term sustainability within the industry.

Talent Development

The foundation of a strong defense industry lies in its people. **Menatek invests in training, education and knowledge transfer,** fostering the next generation of engineers, technicians, and specialists. Through strategic skill-building initiatives, we empower **local talent to develop and sustain critical defense technologies.**

NATO

PLATA



M113



M1 ABRAMS



M2 BRADLEY



M60



M109



M110



M88



LEOPARD 1



LEOPARD 2



HMMWV

PLATFORMS



MENATEK CAPABILITY BOOK

FORMS

FORMER SOVIET EQUIPMENT

T-72



T-80



T-64



T-55



SHILKA



TUNGUSKA



BMP 1-2-3



PLATFORMS



MENATEK CAPABILITY BOOK



PLATFORMS



MENATEK CAPABILITY BOOK

CRITICAL PARTS ON PLATFORMS

CRITICAL PARTS ON PLATFORMS



M113

	NSN	Name
1	12253610	IDLER ARM ASSY
2	2510-01-061-7390	TORSION BAR,SUSPENSION
3	2510-01-061-7391	TORSION BAR,SUSPENSION
4	2510-01-621-2974	SHOCK ABSORBER,DIRECT ACTION
5	2520-01-067-8933	FINAL DRIVE,VEHICULAR
6	2530-01-070-9506	ARM ASSEMBLY,PIVOT,TRACK SUSPENSION
7	2530-01-278-7864	ARM ASSEMBLY,PIVOT,TRACK SUSPENSION
8	2530-01-278-7865	ARM ASSEMBLY,PIVOT,TRACK SUSPENSION
9	2530-01-278-7866	ARM ASSEMBLY,PIVOT,TRACK SUSPENSION
10	2530-12-340-6288	ARM ASSEMBLY,PIVOT,TRACK SUSPENSION
11	2530-12-340-6291	ARM ASSEMBLY,PIVOT,TRACK SUSPENSION
12	2530-12-340-6293	ARM ASSEMBLY,PIVOT,TRACK SUSPENSION
13	3010-01-485-0432	DRIVE UNIT,ANGLE
14	3020-12-337-9759	SPROCKET WHEEL
15	11677988-4	TRACK ASSEMBLY
16	11677988-5	TRACK ASSEMBLY
17	11677988-6	TRACK ASSEMBLY
18	12474844-1	TRACK ASSEMBLY
19	12474844-2	TRACK ASSEMBLY
20	12474844-3	TRACK ASSEMBLY
21	2130-00-767-7881	RADIATOR
22	2510-00-679-7965	TORSION BAR,SUSPENSION
23	2510-00-679-7966	TORSION BAR,SUSPENSION
24	2510-01-028-8573	SHOCK ABSORBER,
25	2510-01-370-8933	TORSION BAR,SUSPENS
26	2510-01-370-8934	TORSION BAR,SUSPENS
27	2520-00-678-8382	WHEEL,SPROCKET
28	2520-00-679-7956	SPROCET WHEEL
29	2520-00-679-7960	WHEEL SPROCET
30	2520-00-711-8382	DRIVE ASSY,FINAL
31	2520-00-895-9164	FINAL DRIVE ASSEMBLY
32	2520-01-061-5766	FINAL DRIVE ASSEMBLY
33	2530-00-004-0761	TRACK SHOE,VEHICULA
34	2530-00-020-2280	TORSION BAR, SUSPENSION

PLATFORMS



MENATEK CAPABILITY BOOK

These are only examples; the complete parts database consists of 45,000 parts.

Explore our extended NSN portfolio at www.menatek.com.tr

CRITICAL PARTS



M88

#	NSN	Name
1	3715489	ARM ASSEMBLY,SUSPEN RIGHT
2	8335106	ARM ASSEMBLY,PIVOT,
3	8676195	TRACK ASSEMBLY
4	8715488	ARM ASSEMBLY,SUSPEN LEFT
5	10905981	ARM ASSEMBLY,IDLER
6	2510-00-678-4150	ANCHOR,TORSION BAR
7	2510-00-703-5899	TORSION BAR,SUSPENS
8	2510-00-703-5900	TORSION BAR,SUSPENS
9	2520-00-678-7032	FINAL DRIVE ASSEMBL RIGHT
10	2520-00-896-9021	FINAL DRIVE ASSEMBL RIGHT
11	2530-00-091-9705	ARM ASSEMBLY,SUSPEN LEFT
12	2530-00-122-6826	M88A1 (T107) Series (Complete Track Chain)
13	2530-00-619-9713	ARM ASSEMBLY,PIVOT, LEFT
14	2530-00-629-2179	ARM ASSEMBLY,PIVOT, RIGHT
15	2530-00-692-9316	TRACK SHOE,VEHICULA
16	2530-00-782-4265	ARM ASSEMBLY,PIVOT
17	2530-00-832-5258	ARM ASSEMBLY,PIVOT,
18	2530-00-871-2854	ARM ASSEMBLY,IDLER
19	2530-01-161-5336	TRACK ASSEMBLY
20	2533-00-692-9316	TRACK SHOE,VEHICULAR
21	2540-01-031-0132	TOWBAR, MOTOR VEHICL
22	2540-01-181-6429	TOWBAR, MOTOR VEHICL
23	2540-01-267-2912	TOWBAR, MOTOR VEHIC
24	3010-00-832-5813	DRIVE UNIT,ANGLE
25	3020-00-293-5136	SPROCKET WHEEL
26	4310-00-255-0435	ARM ASSEMBLY,SUSPEN RIGHT

These are only examples; the complete p

Explore our extended NSN por

S ON PLATFORMS



M1 ABRAMS

	NSN	Name
1	1015-01-180-3512	BRAKE ASSEMBLY
2	1240-01-390-4980	PERISCOPE,ARMORED VEHICLE
3	2510-01-063-5838	TORSION BAR
4	2510-01-345-8881	TORSION BAR,SUSPENS
5	2510-01-345-8882	TORSION BAR,SUSPENS
6	2510-01-350-7070	SHOCK ABSORBER,DIRECT ACTION
7	2530-01-179-1416	IDLER ARM
8	2530-01-179-1417	ARM ASSEMBLY,PIVOT,
9	2530-01-345-8887	M1 TRACK TENSION DEVICE
10	2530-01-435-5175	TRACK SHOE ASSEMBLY
11	2530-01-531-9543	ARM ASSY
12	2530-01-533-9159	ARM ASSEMBLY,PIVOT,TRACK SUSPENSION
13	2530-01-588-7023	ARM ASSEMBLY,PIVOT,
14	2530-01-588-7026	ARM ASSEMBLY,PIVOT,
15	3010-01-069-0484	DRIVE UNIT, ANGLE
16	2530-01-345-8888	TRACK ADJUSTER
17	3020-01-518-3215	SPROCKET WHEEL



M2 BRADLEY

	NSN	Name
1	2510-01-102-3560	Torsion Bar
2	2510-01-102-4722	Torsion Bar
3	2510-01-102-4723	Torsion Bar
4	2510-01-102-4724	Torsion Bar
5	2510-01-108-5304	Torsion Bar
6	2510-01-108-5305	Torsion Bar
7	2520-01-633-2049	Final Drive
8	2530-00-283-4910	LINK,TRACK SHOE,CONNECTING
9	2530-01-102-4540	TRACK ADJUSTER
10	2530-01-214-1114	Idler Arm
11	2530-01-310-2237	Road Wheel
12	2530-01-442-9686	Track Shoe, Vehicular
13	2530-01-587-6762	Link Track Shoe
14	2540-01-312-4730	Suspension
15	2541-01-302-7685	PERISCOPE,TANK
16	2590-01-289-6366	Support Roller
17	3020-01-102-4684	Sprocket Wheel
18	3020-01-589-6739	Sprocket Carrier
19	3040-01-102-4531	Idler Wheel
20	3040-01-102-4532	Idler Wheel
21	6650-01-302-7684	PERISCOPE,TANK

parts database consists of 45,000 parts.
rtfolio at www.menatek.com.tr



CRITICAL PARTS



M109

#	NSN	Name
1	11593743	ARM ASSEMBLY,PIVOT
2	12361559-2	ARM ASSEMBLY,PIVOT
3	2510-00-871-2886	Torsion Bar
4	2510-01-300-0224	TORSION BAR,SUSPENS
5	2510-01-300-0225	TORSION BAR,SUSPENSION
6	2510-01-300-0226	TORSION BAR,SUSPENS
7	2510-01-300-0227	TORSION BAR,SUSPENS
8	2510-01-303-2933	SHOCK ABSORBER
9	2520-00-964-9203	FINAL DRIVE
10	2530-00-008-8821	Torsion Bar
11	2530-00-008-8822	Torsion Bar
12	2530-00-083-5619	Torsion Bar
13	2530-00-088-1686	Torsion Bar
14	2530-00-537-0430	Arm Assy
15	2530-00-871-2886	Torsion Bar
16	2530-00-871-2887	Torsion Bar
17	2530-00-939-7113	WHEEL,IDLER
18	2530-01-346-9233	Track Assembly T-154
19	2930-01-038-3666	Radiator, Engine Coolant
20	2930-01-308-9191	RADIATOR,ENGINE COO
21	3010-01-287-0742	Drive unit, Angle
22	3020-00-293-5136	Sprocket Wheel
23	3020-01-339-0564	SPROCKET WHEEL

These are only examples; the complete p

Explore our extended NSN por

S ON PLATFORMS



#	NSN	Name
1	2510-00-040-0858	TORSION BAR, SUSPENS, RIGHT,
2	2510-00-040-0859	TORSION BAR, SUSPENS, LEFT, COUNTER
3	2510-00-179-5526	SHOCK ABSORBER,DIRE
4	2510-00-752-8974	TORSION BAR,SUSPENS
5	2510-00-752-8976	TORSION BAR,SUSPENS
6	2510-00-752-8981	TORSION BAR,SUSPENS
7	2510-00-752-8983	TORSION BAR,SUSPENS
8	2520-01-023-3719	CARRIER,FINAL DRIVE
9	2520-01-058-1161	FINAL DRIVE ASSEMBL
10	2530-00-004-2301	ARM ASSEMBLY,PIVOT,
11	2530-00-150-5897	TRACK SHOE, VEHICULA
12	2530-00-337-6969	M60 (T142) Series (Complete Track Chain)
13	2530-00-678-3147	ARM ASSY, ROAD WHEEL
14	2530-00-800-1241	ARM ASSEMBLY, ROAD W , NO 2, LEFT
15	2530-00-800-1244	ARM ASSEMBLY, PIVOT, NO 2, RIGHT
16	2530-00-871-2855	ARM ASSEMBLY,PIVOT,
17	2530-00-871-2856	ARM ASSEMBLY, PIVOT, LEFT
18	2530-00-871-2859	ARM ASSEMBLY, PIVOT, NO 6, RIGHT
19	2530-00-871-2860	ARM ASSEMBLY, ROAD W , NO 6 LEFT
20	2530-00-908-6342	ARM ASSEMBLY, PIVOT, LEFT
21	2530-00-908-6343	ARM ASSEMBLY, PVOT, RIGHT
22	2530-01-042-4047	ARM ASSEMBLY, PIVOT
23	2530-01-160-8109	TRACK SHOE, VEHICULA
24	3020-00-252-5637	SPROCKET WHEEL LEFT AND RIGHT
25	3020-00-722-3633	SPROCKET WHEEL

parts database consists of 45,000 parts.
Portfolio at www.menatek.com.tr

CRITICAL PARTS



T-72

	NSN	Name
1	175.20.019	Drive unit
2	2A28	Gun (Barrel Only)
3	175.51.006SB-3	Road arm
4	175.51.007SB-2	Road arm
5	175.51.008SB-3	Road arm
6	175.51.009SB-2	Road arm
7	434.51.120SB	Road arm
8	5903-3003010	Rod
9	2510-61-004-9646 / 4905-2905006	Shock absorber
10	765-33-SB127	Torsion bar
11	2530-61-004-9294 / 434.51.059	Torsion shaft, left
12	765-35-SB123	Track chain (1 vehicle set)
13	613.44.22-D1(G)	Tracks
14	613.44.22SB-2A	Tracks
15	2520-61-013-1629 / 5903-1800005	Transfer assembly



HMMWV

	NSN	Name
1	2510-01-189-1832	SHOCK ABSORBER
2	2510-01-190-3862	SHOCK ABSORBER,DIRECT ACTION
3	2510-01-251-5316	SHOCK ABSORBER FRT AND RR
4	2510-01-554-1789	SHOCK ABSORBER, DIRECT ACTION
5	2520-01-469-9893	TRANSFER TRANSMISSION
6	2530-01-413-1365	ARM ASSY SUSP CONTROL FRONT UPPER RH (COMP)
7	2530-01-414-7844	ARM ASSY SUSP CONTROL FRONT UPPER LH (COMP)
8	2530-01-420-8634	ARM,CONTROL,VEHICULAR SUSPENSION
9	2530-01-554-8270	ARM,CONTROL,VEHICULAR SUSPENSION
10	3040-01-539-4911	IDLE ARM

These are only examples; the complete p
Explore our extended NSN por

S ON PLATFORMS



LEOPARD 1

#	NSN	Name
1	2530-12-143-0558	TORSION BAR
2	2530-12-143-0559	TORSION BAR
3	2530-12-143-0583	ARM ASSEMBLY,PIVOT,TRACK SUSPENSION
4	2530-12-143-0588	ARM ASSEMBLY,PIVOT,TRACK SUSPENSION
5	2530-12-146-8901	ARM ASSEMBLY,PIVOT,TRACK SUSPENSION
6	2530-12-153-6831	TRACK SHOE
7	2530-12-155-6872	SPROCKET WHEEL SEGMENT,DRIVE UNIT
8	2530-12-167-5887	TRACK SHOE
9	2530-12-199-5428	TRACK SHOE
10	2530-12-315-2023	ARM ASSEMBLY,PIVOT,TRACK SUSPENSION
11	2540-12-156-5169	SHOCK ABSORBER LOCK CONNECTION
12	2930-12-199-4424	RADIATOR ENGINE
13	3020-12-153-7137	SPROCKET WHEEL



LEOPARD 2

#	NSN	Name
1	2530-12-175-7542	TRACK SHOE,VEHICULAR
2	2530-12-175-8491	TORSION BAR,SUSPENSION
3	2530-12-175-8492	TORSION BAR,SUSPENSION
4	2530-12-175-8495	ARM ASSEMBLY,PIVOT,TRACK SUSPENSION
5	2530-12-175-8497	ARM ASSEMBLY,PIVOT,TRACK SUSPENSION
6	2530-12-175-8498	ARM ASSEMBLY,PIVOT,TRACK SUSPENSION
7	2530-12-178-7177	SPROCKET WHEEL
8	2530-12-193-8879	ARM ASSEMBLY,PIVOT,TRACK SUSPENSION
9	2530-12-312-5487	TRACK SHOE,VEHICULAR
10	2930-12-178-5310	RADIATOR,ENGINE COO
11	2930-12-186-3884	RADIATOR
12	3020-12-182-4284	SPROCKET WHEEL
13	2510-12-353-5152	TORSION BAR,SUSPENSION
14	2510-12-353-5153	TORSION BAR,SUSPENSION

parts database consists of 45,000 parts.
Portfolio at www.menatek.com.tr

Special Products

Engineered for Specific Demands

*At Menatek, our special products are engineered for the heart of performance.
From advanced bearing technologies to high-load torsion bars, each product is crafted to meet the mission-critical demands of modern land platforms.
Whether it's our proprietary NAZBearings®, running gear or barrels, we deliver custom-engineered solutions that combine durability, precision, and combat-ready reliability.*

B u i l t f o r p e r f o r m a n c e . P r o v e n i n t h e f i e l d .

RUNNING GEAR



TRACK SHOE

TORSION BAR

BARREL

SPECIAL PRODUCTS

MENATEK CAPABILITY BOOK



SPECIAL PRODUCTS



MENATEK CAPABILITY BOOK

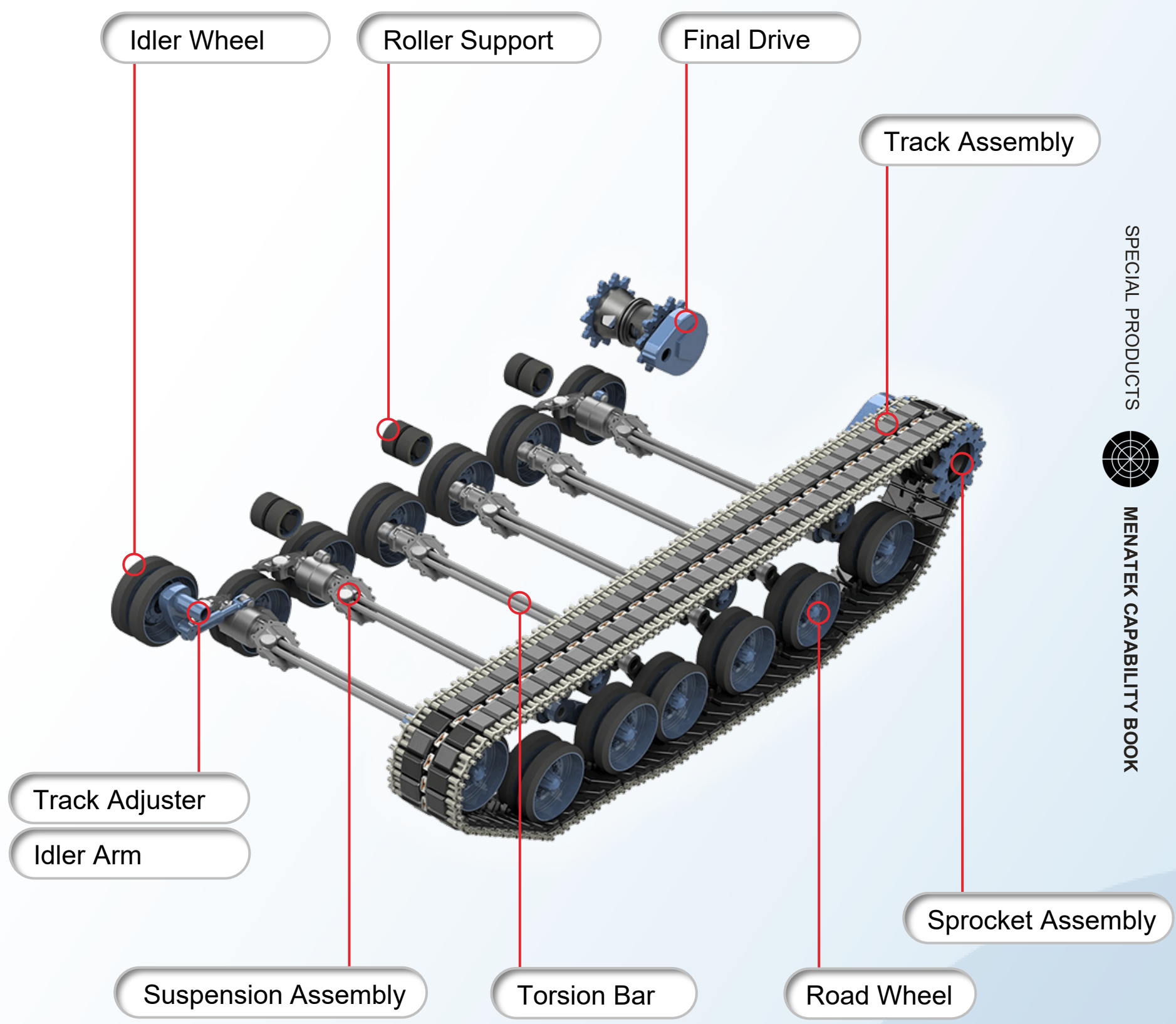
RUNNING GEAR



Scan to explore

RUNNING GEAR

WHERE GROUND MEETS POWER



BUILD TO MOVE, ENGINEERED TO ENDURE

Menatek has the capability to fully design, manufacture, and integrate complete Running Gear systems for tracked vehicles across various weight and mission categories. This includes core components such as final drive gearboxes, sprocket wheels, track assemblies, road arms, and torsion bars—all of which represent Menatek’s most frequently manufactured and validated product range.

With extensive experience in system-level integration and component-level testing, **Menatek offers end-to-end solutions from engineering and prototyping** to serial production and performance validation. Our in-house test infrastructure and proven quality systems ensure durability, reliability, and platform compatibility for every Running Gear solution we deliver.

SPECIAL PRODUCTS



MENATEK CAPABILITY BOOK

**One Source Supply for
Running Gear**

**Meeting Requirements of
Tenders and Special
Requests**

**Several delivered,
tested & proven
‘Off-the-shelf’ solutions
of MENATEK for
various platforms**

RUNNING GEAR

Where Ground Meets Power

**ONE
SOURCE
SUPPLY
FOR
RUNNING
GEAR**

SPECIAL PRODUCTS



MENATEK CAPABILITY BOOK



COMPONENTS

RUNNING GEAR

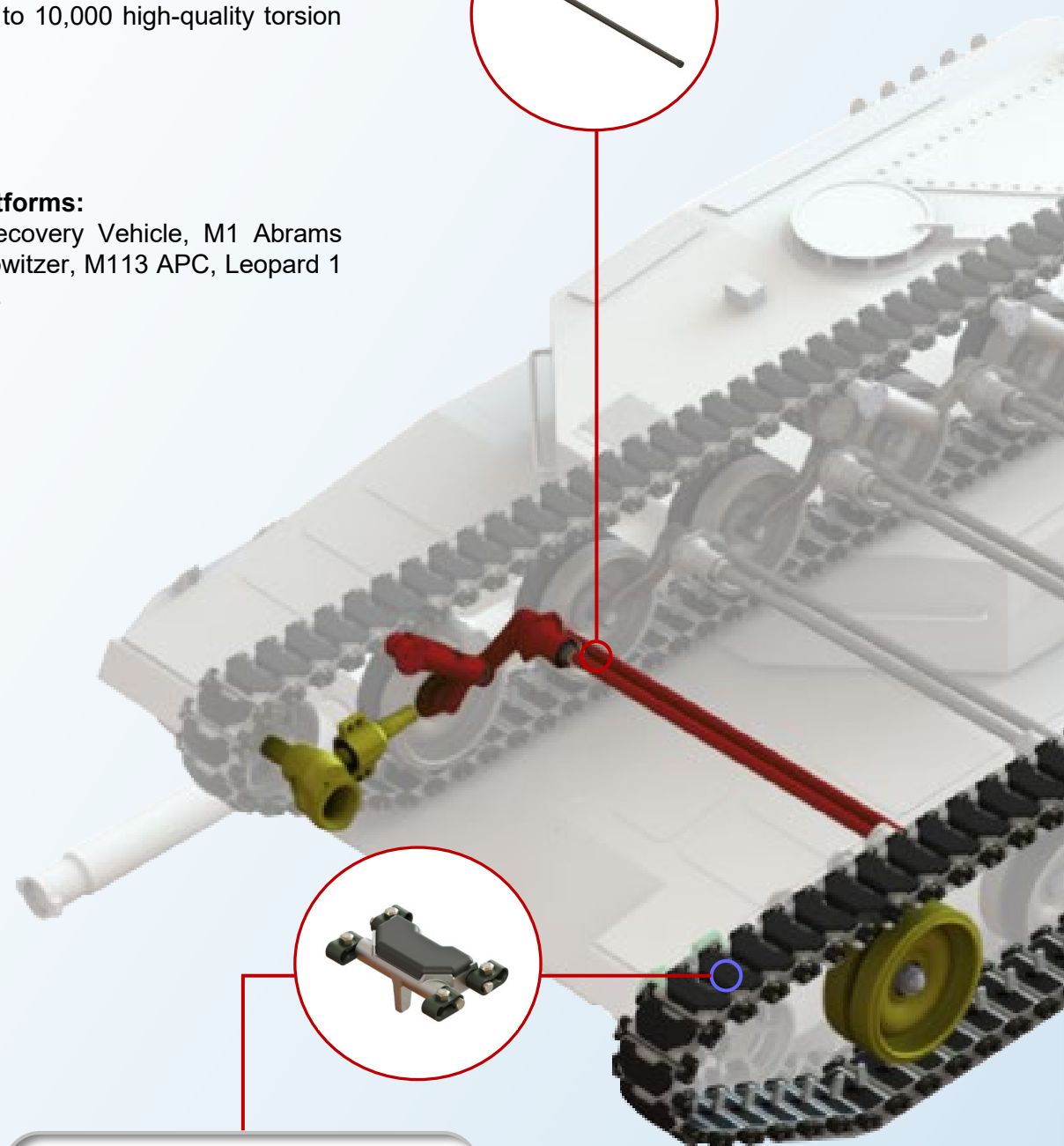
TORSION BAR

Torsion Bar is one of the most crucial part belong to running gear of military tracked vehicles. It is basically a spring which works under torsional load. Menatek Defense Technologies have been working on torsion bars since and now can design and manufacture torsion bars for various platforms. Menatek is capable of manufacturing up to 10,000 high-quality torsion bars in a year.

Body diameter up to 80 mm
Length from 1.300 to 2.800 mm

Menatek's Capabilities on Platforms:

M48 MBT, M60 MBT, M88 Recovery Vehicle, M1 Abrams MBT, M2 Bradley IFV, M109 Howitzer, M113 APC, Leopard 1 MBT, Leopard 2 MBT and more.



TRACK ASSEMBLY

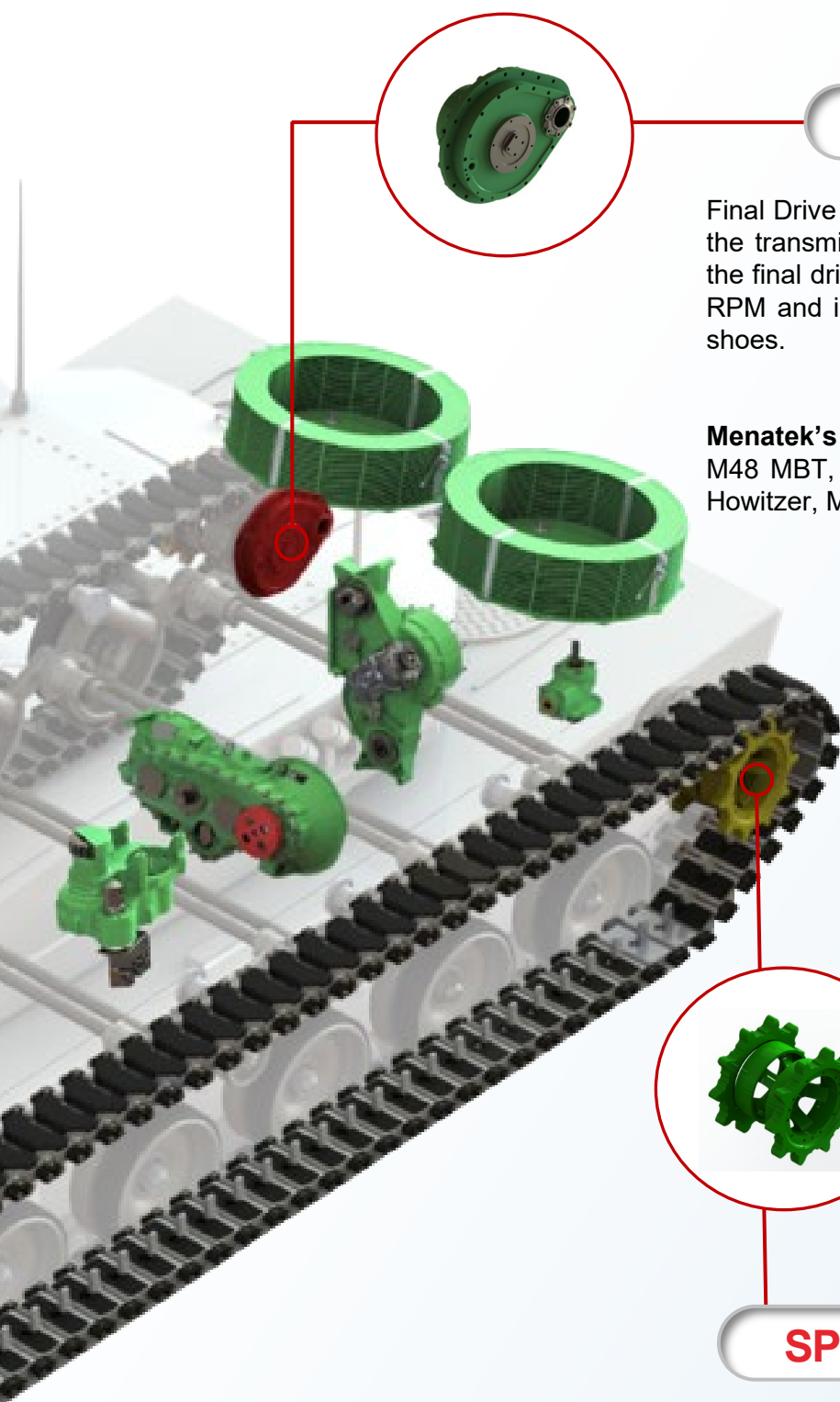
Track Assembly is a unique component which provides the vehicle mobility. By transmitting the torque coming from the final drive into directional movement, it enables the tracked platforms to move in almost all types of terrain. Track assembly composes of center guide, track shoe links and each links are connected with end connectors.

Menatek's Capabilities on Platforms:

M48 MBT, M60 MBT, M88 Recovery Vehicle, M1 Abrams MBT, M2 Bradley IFV, M109 Howitzer, M113 APC and more.

ONE SOURCE SUPPLY

ING GEAR NEMENTS



FINAL DRIVE

Final Drive is a crucial component of the running gear, located between the transmission output shaft and sprocket assembly. The purpose of the final drive is to provide the final stage of gear reduction to decrease RPM and increase torque before the power is transmitted to the track shoes.

Menatek's Capabilities on Platforms:

M48 MBT, M60 MBT, M88 Recovery Vehicle, M2 Bradley IFV, M109 Howitzer, M113 APC and others.



SPROCKET ASSEMBLY

Sprocket assembly is a component of running gear of military tracked vehicles which takes role in driving the track assembly. It conducts the torque from final drive to track assembly. It consists of two different main parts; (2ea) sprocket gear (wheel) and sprocket carrier.

Menatek's Capabilities on Platforms:

M48 MBT, M60 MBT, M88 Recovery Vehicle, M1 Abrams MBT, M2 Bradley IFV, M109 Howitzer, M113 APC and more.

SPECIAL PRODUCTS



MENATEK CAPABILITY BOOK

FOR RUNNING GEAR



COMPONENTS

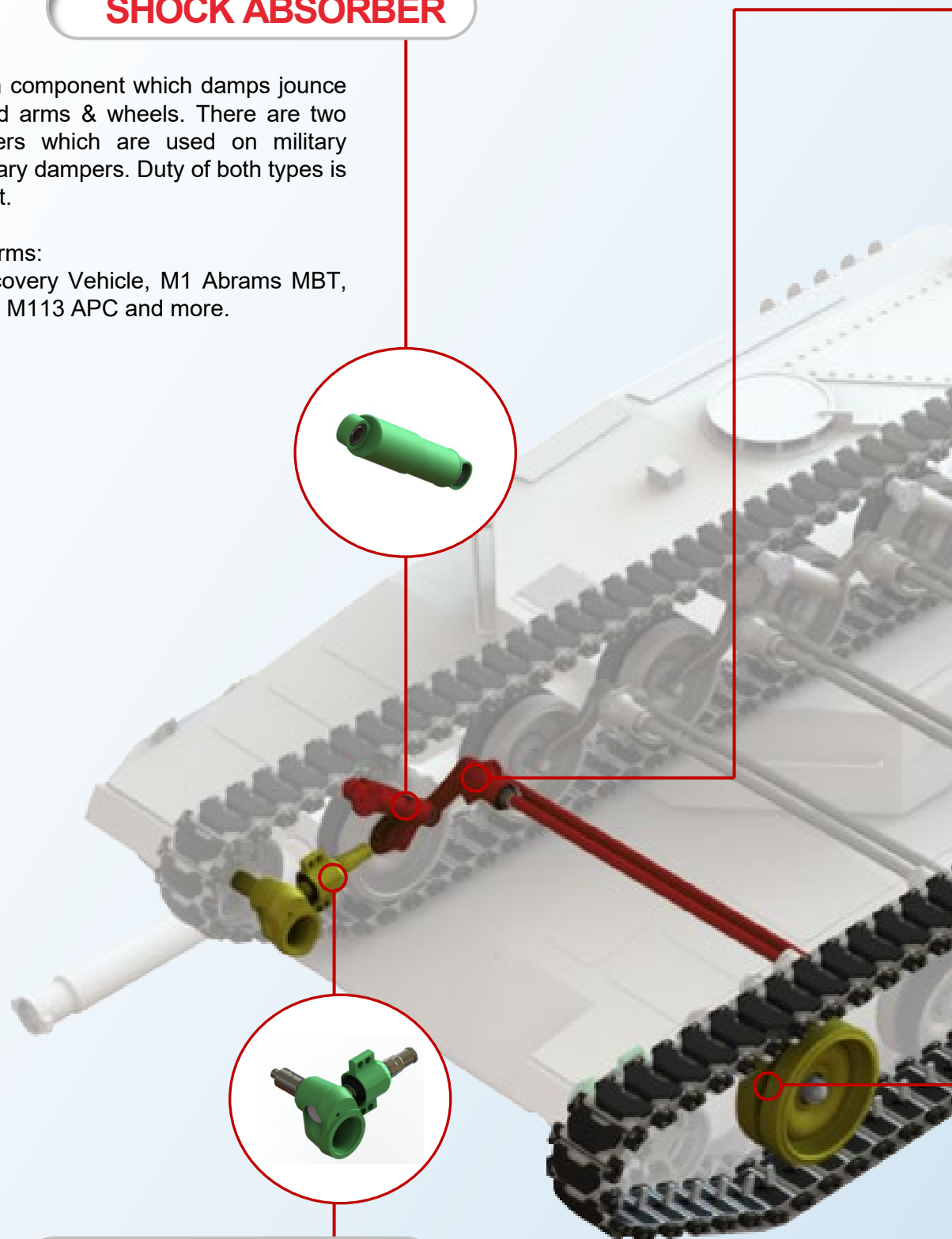
RUNNING

SHOCK ABSORBER

Shock absorber is a suspension component which damps jounce and rebound motion of the road arms & wheels. There are two major types of shock absorbers which are used on military vehicles; linear dampers and rotary dampers. Duty of both types is to absorb energy by dissipating it.

Menatek's Capabilities on Platforms:

M48 MBT, M60 MBT, M88 Recovery Vehicle, M1 Abrams MBT, M2 Bradley IFV, M109 Howitzer, M113 APC and more.



TRACK ADJUSTER

Track Adjuster is an important component which adjusts the tension of track assembly by collapsing and extending when needed. Track adjuster works together with the idler assembly to provide the right amount of flexibility for the track assembly.

Menatek's Capabilities on Platforms:

M48 MBT, M60 MBT, M88 Recovery Vehicle, M1 Abrams MBT, M2 Bradley IFV, M109 Howitzer, M113 APC and more.

ONE SOURCE SUPPLY

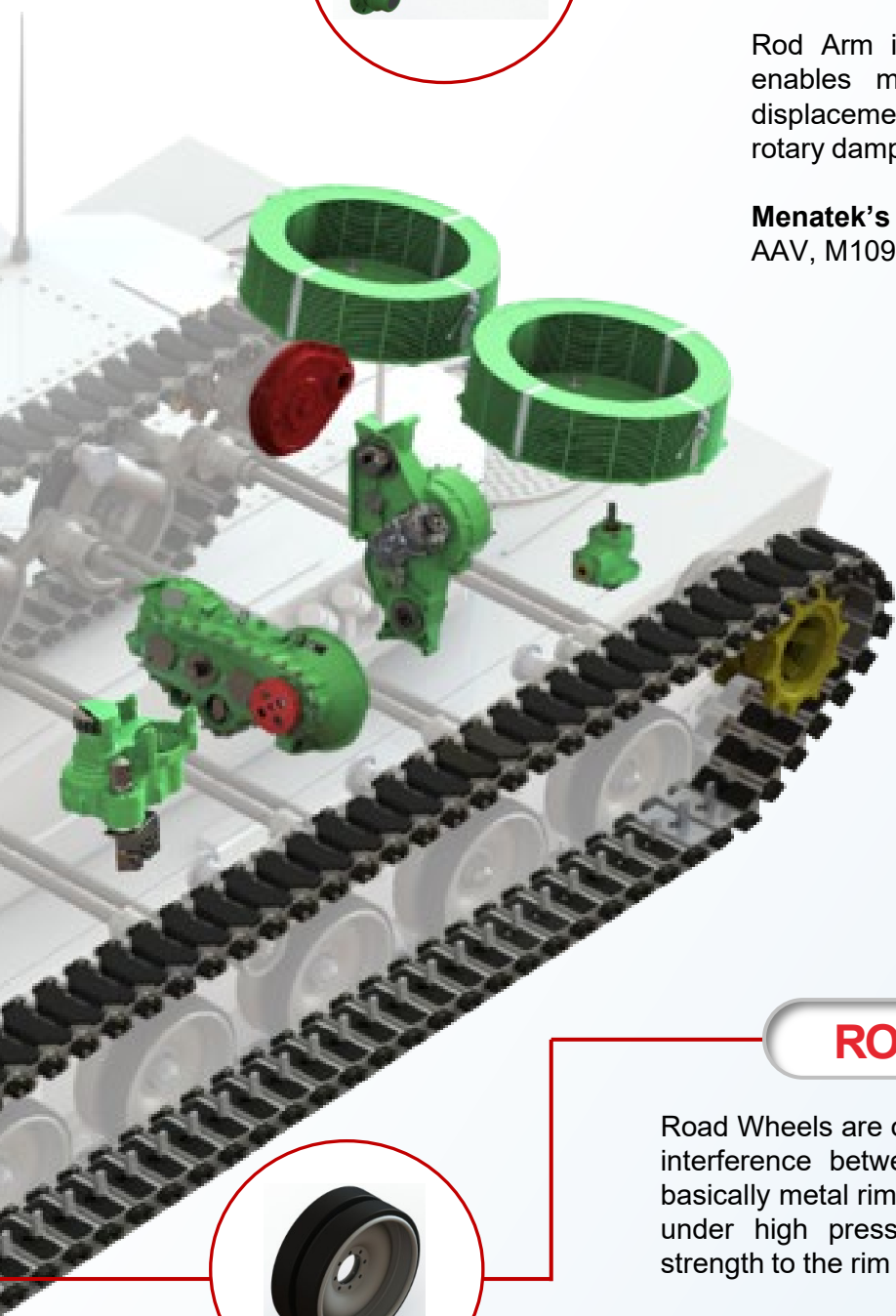
ING GEAR NEMENTS



ROD ARM

Rod Arm is the main component of the suspension system which enables movement of wheel and takes role in conducting the displacement of wheel into other suspension components such as rotary damper, shock absorber or torsion bar.

Menatek's Capabilities on Platforms:
AAV, M109 Paladin, M2 Bradley, M88, M113 and more.



ROAD WHEEL

Road Wheels are other important components of running gear which create the interference between the support arm and the track assembly. They are basically metal rims vulcanized with a tough rubber around. Constantly working under high pressure and friction, the rubber's recipe and adhesion strength to the rim are key points to Road Wheel production.

Menatek's Capabilities on Platforms:
M48 MBT, M60 MBT, M88 Recovery Vehicle, M1 Abrams MBT, M2 Bradley IFV, M109 Howitzer, M113 APC and more.

SPECIAL PRODUCTS



MENATEK CAPABILITY BOOK

FOR RUNNING GEAR

SPECIAL PRODUCTS



MENATEK CAPABILITY BOOK

NAZ BEARINGS[®]

Powered with
DuPont[™] Engineered Composite



Scan to explore



MOST DURABLE SELF LUBRICATING BEARINGS IN THE WORLD

About NAZ Bearings®

NAZ Bearings® is a leading brand of **self-lubricating, maintenance-free** spherical and straddle bearings, delivering unparalleled performance and reliability across a wide range of applications. With a focus on innovation and quality, NAZ Bearings® sets the standard for excellence in the industry.

Our Differentiation

Engineering and testing capability in part level and system level. Using high quality materials and quality control in each manufacturing process NAZ Bearings® advanced patented liner technology, developed in collaboration with DuPont, a global leader in materials science.

SPECIAL PRODUCTS



MENATEK CAPABILITY BOOK



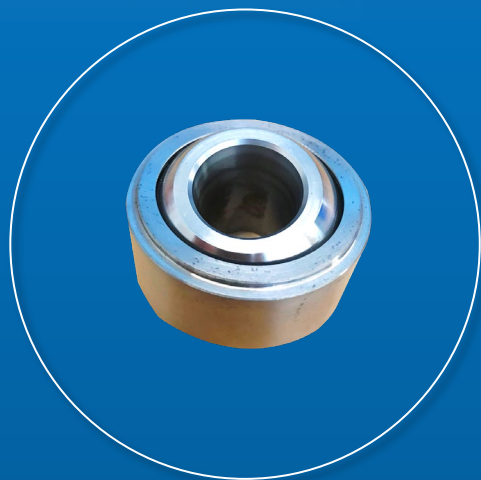
collaboration with DuPont

Trademark & License Agreement

In 2024, our collaboration with DuPont led to the launch of NAZ Bearings®, a groundbreaking innovation that extends our engineering capabilities beyond defense into aerospace, wind energy and industrial sectors. This partnership reflects Menatek's commitment to pushing technological boundaries and expanding into new frontiers.



Spherical Type



Straddle Type



+25%
MORE
DURABLE

3x Times
LONGER
LIFE

3 as short as
Months
FASTEST
DELIVERY

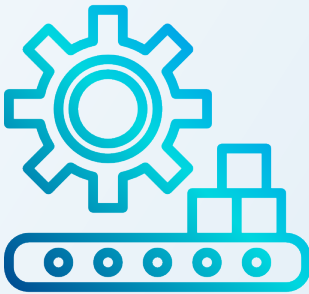


Why Choose NAZ Bearings®

- Exceptional Quality**
Manufactured to the highest standards, using premium materials and advanced manufacturing processes, ensuring superior quality and reliability.
- Customized Solutions**
We offer unbeatable lead times to provide our customers with seamless supply and minimize downtime.
- Cost-Effectiveness**
We provide cost-effective solutions without compromising on quality or performance. Our competitive pricing ensures that our customers receive the best possible return on investment.
- Customized Solutions**
We offer application-specific spherical and straddle bearings in a variety of sizes, tailored to meet the specific needs and requirements of our customers.
- Proven Performance**
Field-tested and trusted by leading companies worldwide, NAZ Bearings® deliver unmatched durability and performance in the most demanding applications.
- Rigorous Testing**
NAZ Bearings® undergo rigorous testing under quasistatic and dynamic loading conditions to ensure performance and reliability in real-world applications. Our testing capabilities include high-frequency loading, high-temperature testing and testing with mil-spec abrasive dust/debris, allowing us to validate the durability and resilience of our bearings under the most demanding conditions.
- Expert Support**
Our experienced team is dedicated to providing exceptional customer support, helping to find the right solutions for their specific needs and challenges. From product selection to installation and maintenance, we're here to assist every step of the way.

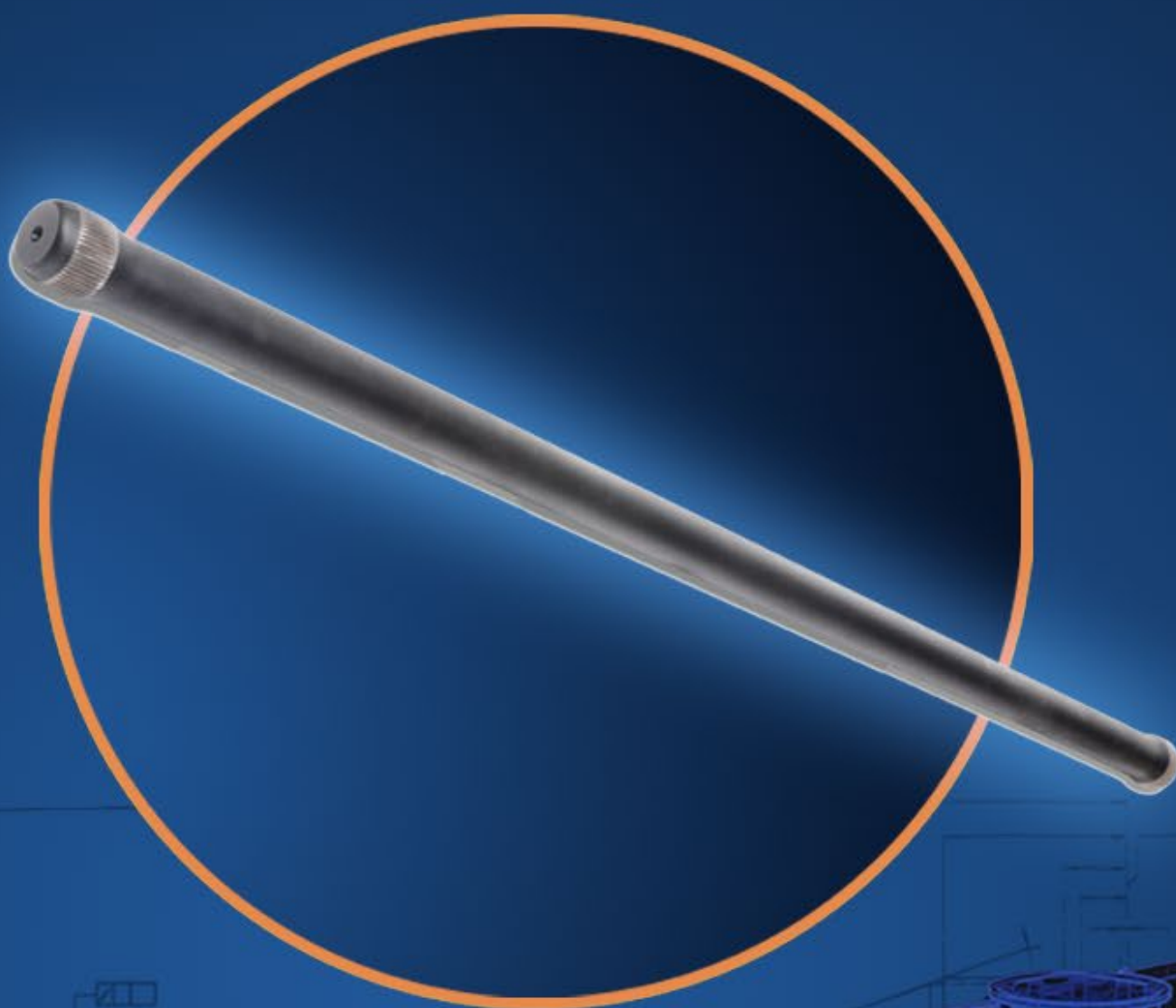
SPECIAL PRODUCTS

MENATEK CAPABILITY BOOK



NAZ Bearings® are manufactured to meet any desired dimensions and specifications.

TORSION BAR



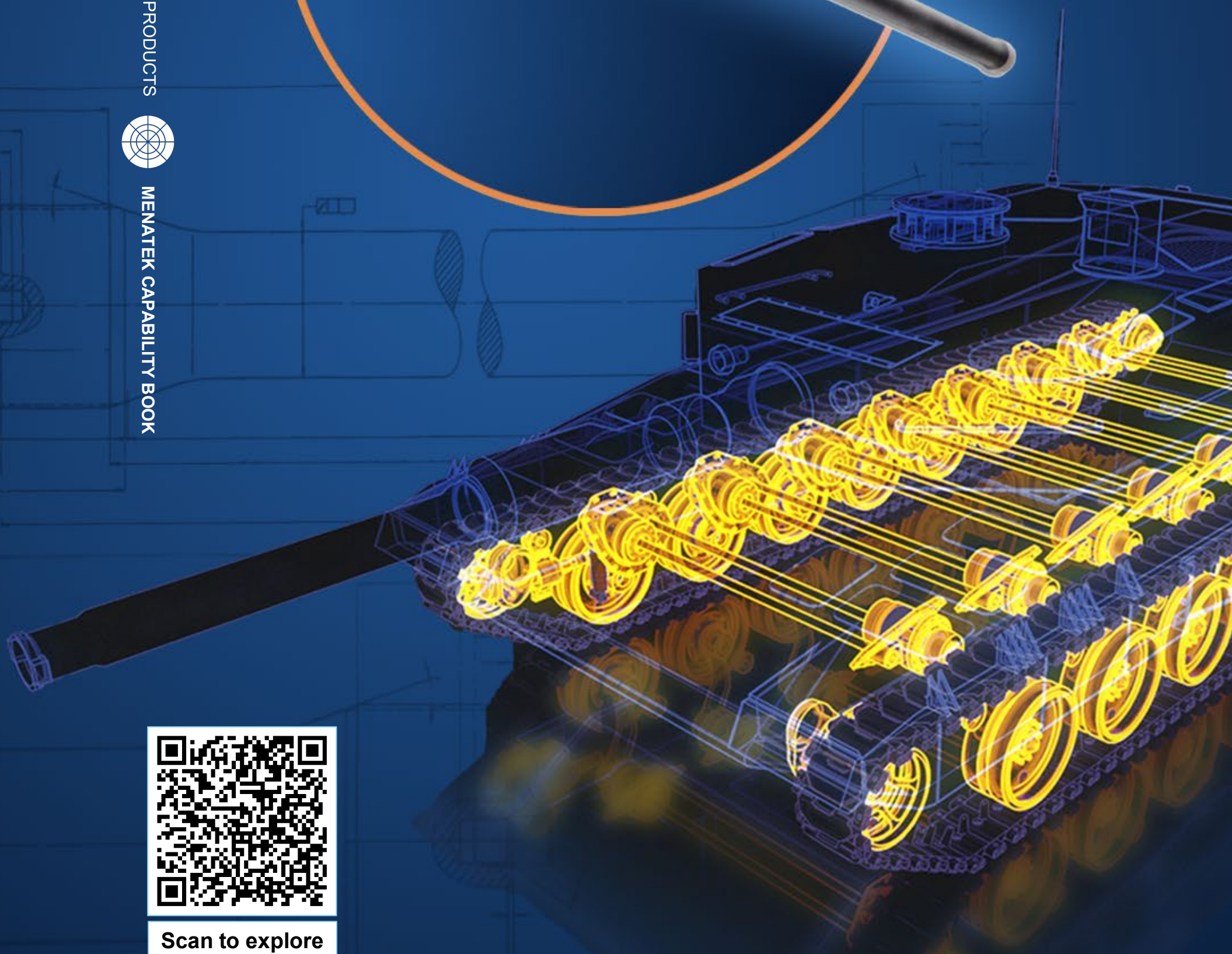
SPECIAL PRODUCTS



MENATEK CAPABILITY BOOK



Scan to explore



TORSION BAR

THE BACKBONE OF MOBILITY

About

TORSION BAR

Torsion bars are a testament to mechanical ingenuity and engineering excellence. They act as **energy accumulators** for almost all military tracked vehicles, carrying them through the battlefield in every situation for thousands of kilometers. A bar in production may go through 10+ processes including multiple heat treatments, forging, machining, shot peening, and surface treatments.

Our

Differentiation

Different military doctrines require various equipment, leading to variations in tracked vehicle weights. Consequently, specialized suspension springs are required to achieve advanced mobility. **MENATEK excels in delivering customized torsion bars that are meticulously tailored to meet the specific requirements of each vehicle.**

Why Choose *TORSION BAR*

Superior Quality

Manufactured with premium materials and advanced production methods, these torsion bars guarantee exceptional durability and performance under the toughest conditions.

Rapid Delivery

With our efficient production processes and smooth operations, we ensure quick delivery times without compromising quality. Our torsion bars are ready when you need them.

Budget Friendly

Our torsion bars offer exceptional value, combining high performance with competitive pricing. By optimizing our production methods, we deliver quality without breaking your budget.

Tailored Solutions

We offer customized torsion bars to meet the unique needs of different military vehicles. Our expertise enables us to design and produce solutions that perfectly match your requirements.

Reliable Performance

Our torsion bars have undergone field tests and are proven to perform reliably in the toughest conditions. Trusted by armed forces worldwide, they provide consistent and dependable performance.

Extensive Testing

Torsion bars each heat load go through extensive testing, including assessments on our torsion bar cycle test machine to ensure they meet the highest standards of quality and durability. Our commitment to rigorous testing guarantees reliable performance in every mission.

Professional Assistance

Our experienced team is dedicated to providing exceptional customer support, helping to find the right solutions for their specific needs and challenges. From material selection to integration, we're here to assist every step of the way.

SPECIAL PRODUCTS



MENATEK CAPABILITY BOOK

TORSION BAR

SPECIAL PRODUCTS



MENATEK CAPABILITY BOOK



Mechanical Ingenuity

Acts as an energy accumulator for tanks and military vehicles.



Custom Design

Tailored torsion bars for different vehicle needs.



Comprehensive Production

Involves multiple heat treatments, forging, machining etc.

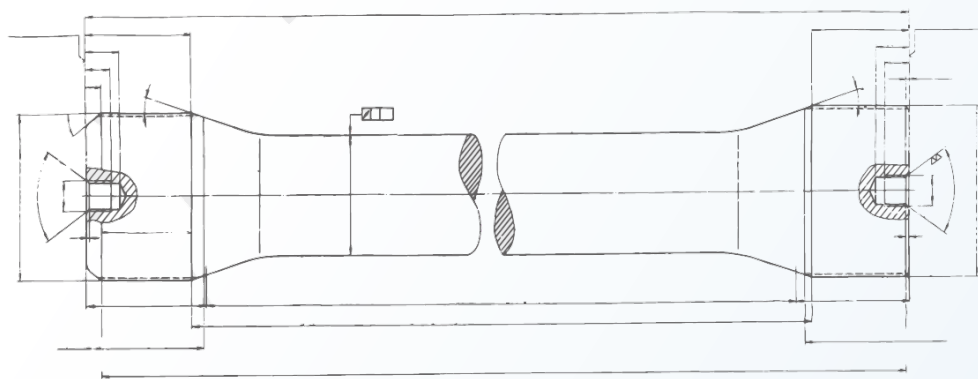


Tested and Approved

Complete service including fatigue testing and manufacturing.

TORSION BAR

PRECISION ENGINEERING ENHANCED PERFORMANCE



Materials Used

MENATEK uses various types of ESR and VAR steel alloys to manufacture torsion bars, ensuring they meet performance requirements.

Dimensions

80 mm	1000-2800 mm
Diameter	Length

Vehicle Types

MENATEK manufactures torsion bars for a variety of vehicles, including

- **Main Battle Tanks (MBT),**
- **Infantry Fighting Vehicles (IFV),**
- **Armored Personnel Carriers (APC),**
- **Amphibious Assault Vehicles (AAV),**
- **Armored Recovery Vehicles (ARV)**
- **and all other tracked as well as wheeled vehicles.**

Endurance

MENATEK's torsion bars undergo precisely controlled manufacturing processes, including shot peening, heat treatment, surface finishing, and presetting. As a result, our high-stiffness torsion bars achieve life cycles of more than 100,000 at full wind-up angle.

Coating

MENATEK utilizes tape wrapping and PU coating to provide physical protection to the body of each torsion bar. PU coating offers superior protection against physical impacts and corrosion, ensuring long-lasting durability.





SPECIAL PRODUCTS



MENATEK CAPABILITY BOOK

TRACK SHOE & MENATRACK

TRACK SHOE MANUFACTURING MACHINE



Scan to explore

TRACK SHOE

SECURE YOUR PATH

About TRACK SHOE

Our track shoes are manufactured using **casting and forging technologies**. **MENATEK** uses its specially **developed custom rubber recipe for pads** to ensure maximum durability and performance. They are **available** in both **integral pad and replaceable pad configurations**.

Our Differentiation

What sets our track shoes apart is our **ability to produce any type**, ensuring superior durability and adaptability. Custom rubber recipes enhance performance and longevity, meeting the specific needs of various military applications.

SUPERIOR
DURABILITY

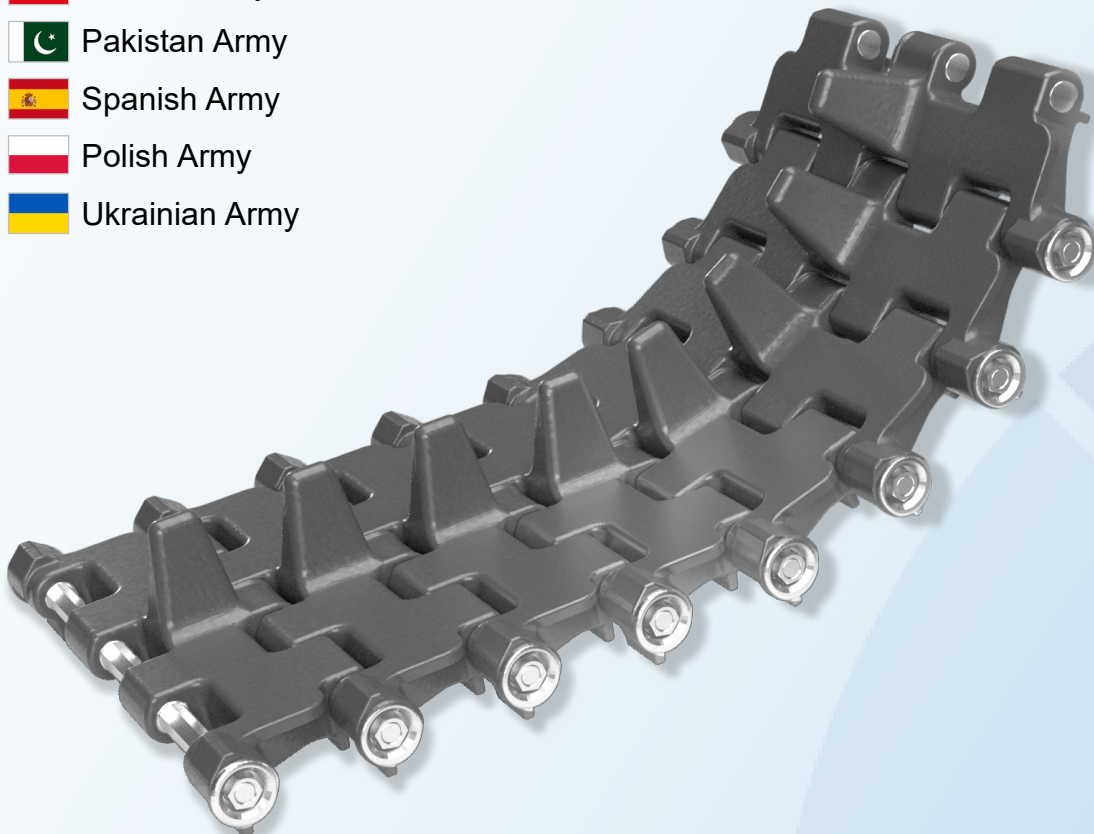
HIGH
PERFORMANCE

FIELD-PROVEN
RELIABILITY

HARSH CONDITION
RESISTANCE

Proven in the field and trusted by military forces in countries such as:

- 2007  Turkish Army
- 2010  Pakistan Army
- 2016  Spanish Army
- 2023  Polish Army
- 2024  Ukrainian Army



SECURE TRACK

SPECIAL PRODUCTS



MENATEK CAPABILITY BOOK



M113

T-130

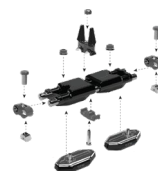


T-150



M60

T-142



T-72



M109

T-154



M110

T-107



T-80



SHOE OUR PATH



M88

T-107



T-142



T-85



T-59



T-62

T-64

T-55

BMP-2

Other types of Track Shoes



T-69



SPECIAL PRODUCTS



MENATEK CAPABILITY BOOK



MENATRACK

TRACK SHOE MANUFACTURING MACHINE

SPECIAL PRODUCTS



MENATEK CAPABILITY BOOK



Scan to explore



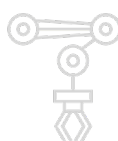
MENATRACK

TRACK SHOE MANUFACTURING MACHINE



Robotic Integration

Features single or double robot operation for efficient and error-free production.



Automation

Fully automated systems with options for camera integration and different feeding mechanisms.



Precision Machining

Ensures high precision and quality in mass production.



Versatility

Can handle various raw materials including steel and aluminum.

Capable of manufacturing;

Cast and **&** **Forged** Track Shoes

SPECIAL PRODUCTS



MENATEK CAPABILITY BOOK



MILITARY



HEAVY DUTY

Application Areas

BARREL

SPECIAL PRODUCTS



MENATEK CAPABILITY BOOK

BARREL

PRECISION BARREL SOLUTIONS

Our capabilities up to 105 mm, ensuring that we can meet the most demanding requirements with precision and reliability.

We specialize in superior barrels tailored to meet a wide range of specifications and applications

- **14.5x114** (KPVT)
- **20x102** (M39 A3 Gun)
- **20x102** (M197 and M61 Guns)
- **20x102** (Barrel with Integrated Muzzle Brake for M39A3 Automatic Gun)
- **20x110** (MK2 and Series Automatic Guns)
- **23x152** (2A7 or 2A14 Guns in Zu-23-2 and Zsu-23-4 Systems)
- **25x137** (M811 Cannon)
- **25x137** (KBA Cannon)
- **30x113** (Medium Caliber Auto Cannon Barrel)
- **30x165** (2A38)
- **30x165** (2A42)
- **30x165** (2A72)
- **35x228** (KDA, KDC, KDG-KD Series Cannon)
- **40mm** (GP25)
- **40mm** (UBGL)
- **40mm** (Automatic Grenade Launcher HV)
- **40mm** (L70 BOFORS Navy Gun Barrel)
- **90mm** (M48)
- **100mm** (2A70)
- **100mm** (T-55 Barrel D-10T)
- **105mm** (M48A5, M60)

SPECIAL PRODUCTS



MENATEK CAPABILITY BOOK

BARREL

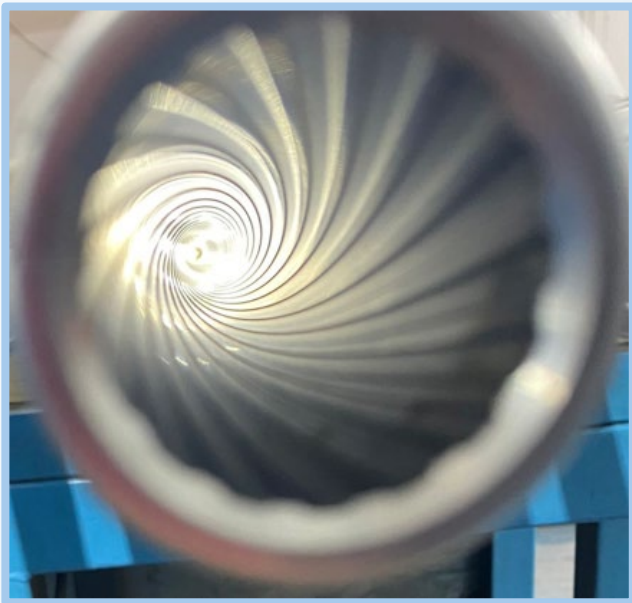
PRECISION BARREL SOLUTIONS

At Menatek, our barrel production combines high-grade materials, advanced manufacturing techniques, and rigorous quality control to ensure maximum performance, safety, and durability. Our capabilities cover various calibers up to 105 mm, including rifled and smoothbore options—each designed for precision, consistency, and mission reliability. From concept to production, every Menatek barrel is engineered to withstand extreme conditions and deliver long-lasting accuracy.

SPECIAL PRODUCTS



MENATEK CAPABILITY BOOK



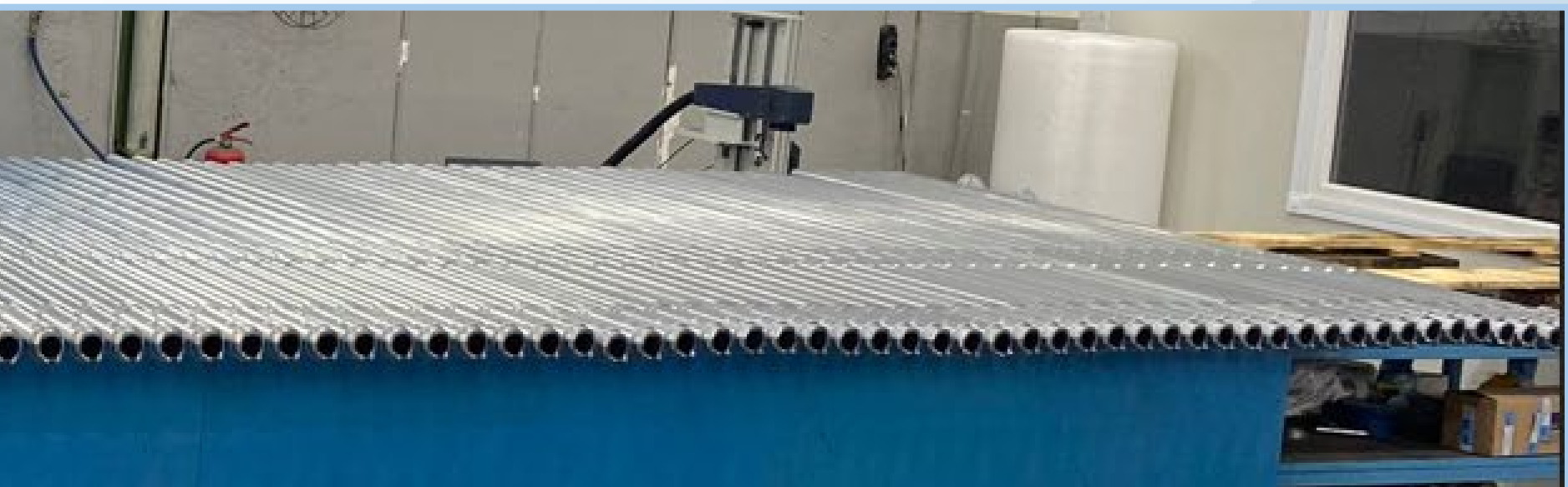
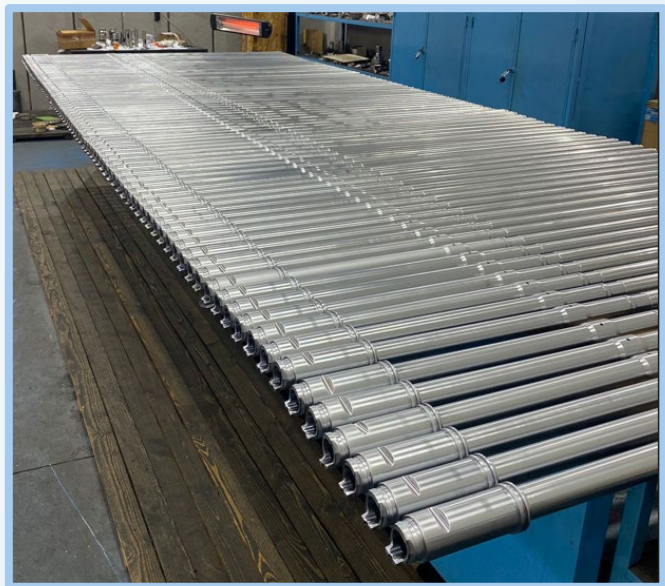


2A38

2A72

2A42

Whether for armored vehicles, remote weapon systems, or training platforms, we offer both standard and customized barrel solutions to meet the evolving needs of modern land forces.



SPECIAL PRODUCTS



MENATEK CAPABILITY BOOK



LET'S BUILD THE FUTURE TOGETHER

Visit us to explore how we can create lasting impact—together.

www.menatek.com.tr



MENATEK
Defense Technologies

30th year



MENATEK
Defense Technologies

30th year

Address: Esenşehir Mahallesi Bostancı Yolu
Haseki Sokak No:22
Ümraniye 34776 İstanbul/TÜRKİYE

Phone: +90 850 800 66 85

Mail: sales@menatek.com.tr

www.menatek.com.tr